

COLOURS CHART

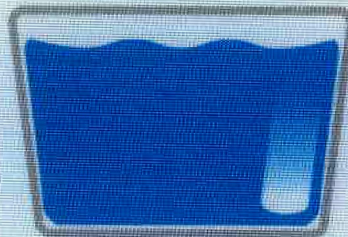
OFS 0003
SUBLI OFFSET
YELLOW
✱



OFS 0064
SUBLI OFFSET
YELLOW FL



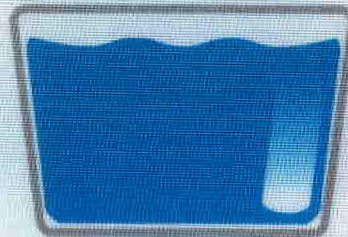
OFS 0032
SUBLI OFFSET
BLUE



OFS 0005
SUBLI OFFSET
RED FL



OFS 0033
SUBLI OFFSET
BLUE HIGH FAST
✱



OFS 0011
SUBLI OFFSET
RED
✱



OFS 0070
SUBLI OFFSET
BLACK



OFS 0027
SUBLI OFFSET
MAGENTA



OFS 0071
SUBLI OFFSET
DEEP BLACK



OFS 0081
SUBLI OFFSET
EXTRA BLACK
✱



✱ Ink with same colour index of Subli *Xtream-Jet* Digital Ink



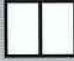


SUBLI OFF-SET OFS

SUBLIMATION SHEETFED AND WEB OFF-SET INKS FOR LITHO PRINTING

SUBLI OFF-SET OFS is a range of litho inks for the printing of sublimation transfers. The transfer paper printed with SUBLI OFF-SET OFS is suitable for transfer on polyester. We recommended to carry out some tests before making transfers on other supports such as: nylon 6, nylon 6.6, acrylic, triacrylic, polyester/cotton.

APPLICATIONS

- Printing on polyester fabrics used in sportswear and outerwear
- Printing on mixed synthetic fabrics (min. 60% of synthetic fibres) used in sportswear and outerwear
- Printing on plastic substrates used in the manufacturing of sport equipment such as bicycles, skis, snowboards, wakeboards, skateboards, windsurf etc.
- Printing on every substrates (wood, ceramics, glass) overprinted with polyester-based or polyamid-based coating

SUBLI OFF-SET OFS	 LIGHT ISO 105 / B02	 WASHING (60° C) ISO 105 / C03	 PERSPIRATION ISO 105 / E04	 DRY RUBBING ISO 105 / X12	 DRY CLEAN ISO 105 / D01
OFS 0003 YELLOW	6-7	4-5	4-5	4	4
OFS 0011 RED	6	4-5	4-5	4	4
OFS 0027 MAGENTA	6	4-5	4-5	4	4
OFS 0032 BLUE	3	4-5	4-5	5	4
OFS 0033 BLUE HIGH FAST	5	4	4	4	4
OFS 0070 BLACK	6	5	5	4	4
OFS 0081 EXTRA BLACK	6	5	5	4-5	5
OFS 0071 DEEP BLACK	6	5	5	4-5	5
OFS 0064 YELLOW FL	3	4-5	4-5	4	4
OFS 0005 RED FL	5-6	4-5	5	4	4

IMPORTANT: We strongly suggest to always carry out pre-tests of printing and drying of the substrate to be printed in order to establish the operative conditions and the results to be achieved. We also suggest to stir the product before the use and carefully follow the instructions written on the label and on the material safety data sheet enclosed to the products. Furthermore, we remind you that the ink performances could vary according to the type of printer and substrate used in the final application.

NOTE: The information contained in this information sheet are based on our present experience and knowledge. In consideration of the various factors which can effect the results achieved in the final application, ETS Srl does not take any responsibility for an improper use of the product by the user who could violate or damage rights of third parties.

The information contained herein is general and believed to be correct at the time of writing. No responsibility will be accepted by ETS Srl for any loss or damage suffered by anyone as a result of the information contained herein.